



曹洞宗北米別院禪宗寺
ZENSHUJI SOTO MISSION



123 South Hewitt Street, Los Angeles, California 90012, USA
Telephone: (213) 624-8658 · Fax: (213) 624-8650 · www.zenshuji.org

BOD OFFICERS

Board Chair
Carolyn Hashiba
First Vice Chairperson
Atsuko Kubota
Second Vice Chairperson
Ellen Nagamine

OFFICERS

President
Howard Miyoshi
Vice Presidents
Atsuko Kubota
Ellen Nagamine
Tetsuyasu Uekuma
Chief Financial Officer
David Isobe
Treasurer, Regular Accts
Midori Nakatani
Treasurer, Special Accts
Harry Matsumoto
Secretary, Recording
Georgene Salisbury
Secretary, Corresponding
Ellen Nagamine
Atsuko Kubota

BOARD OF DIRECTORS

Cude, Mitsuko
Flores, John
Hashiba, Carolyn Abe
Honjiyo, Amy
Isobe, David
Kubota, Atsuko
Matsumoto, Harry
Miyoshi, Howard
Nagamine, Ellen
Salisbury, Georgene
Seki, Hiroko
Soo Hoo, Kaye
Takagi, Ben
Uekuma, Tetsuyasu
Vernekar, Sunil

BOARD ADVISORS

Mitsuko Cude
Teiji Kawana
Sekinori Misawa
Hideo Mura
Tsuyoshi Mura

MINISTERS

Head Priest
Reverend Shumyo Kojima
Priests
Reverend Daiki Toho
Reverend Ryoko Miyazaki
Reverend Wako Kato
Reverend Howard Miyoshi
Reverend Duncan Williams

September 3, 2021

Dear Members and Friends of Zenshuji Soto Mission,

It's been a difficult and challenging past year but we are looking forward to the future with some normalcy, positive attitude and bright outlook to the future. We are elated to notify you of the celebration of Zenshuji's 100th Anniversary in the fall of next year 2022. This letter is to announce the commencement of the 100th Anniversary capital campaign. Our goal is to reach \$100,000 by August, 2022. Doing so will allow us to start and complete some of the major projects that will enable us to better serve our members and friends.

Zenshuji is grateful for your support and monetary donation at any time. We have received donations from Zenshuji members, clubs, organizations, and affiliations toward our goal. We thank you for helping us begin the road toward these special projects related to Wheelchair Access Ramp Relocation, Nokotsudo Expansion and other projects and events.

Zenshuji Soto Mission is a non-profit organization as described in 501(c)(3) of the federal income tax law. Donations may be made in lump sum, spread out in increments, or in one's will or trust. Enclosed is a pledge form and stamped envelope for your convenience.

On behalf of the Board of Directors and Priests, we would like to express our sincerest appreciation and gratitude for your dedication and commitment to Zenshuji. Like during the 90th Anniversary we will reach the 100th Anniversary Goal together and **"GAMBARIMASHO!"**

In Gassho,

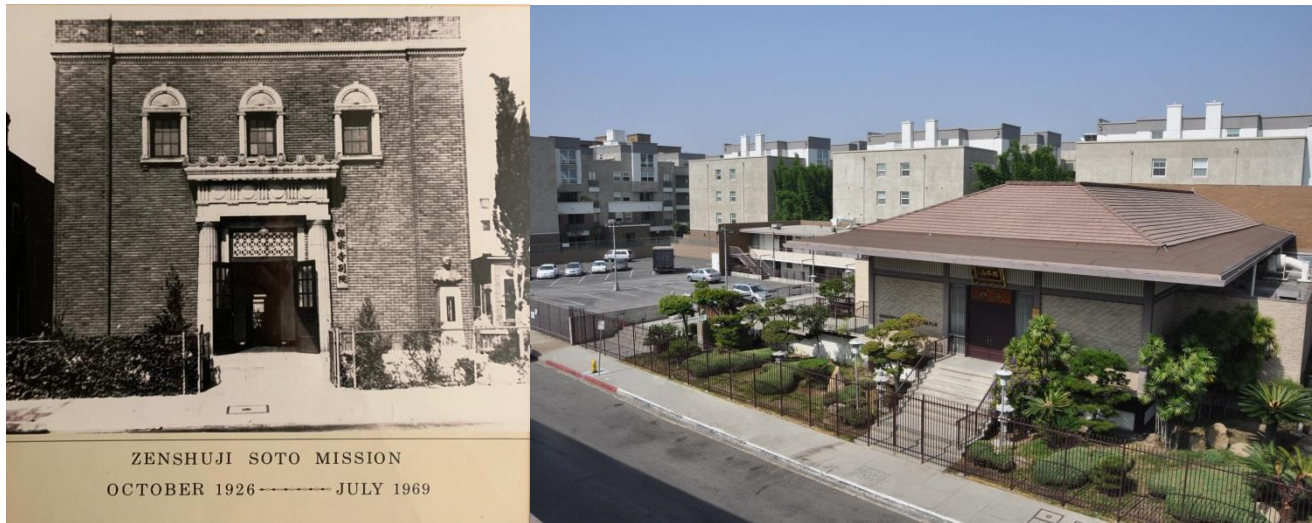
Atsuko Kubota
100th Anniversary Committee Chair

Carolyn Abe Hashiba
Board of Directors Chair

Howard Miyoshi
President

Rev. Shumyo Kojima
Head Priest

Zenshuji 100th Anniversary Projects Fund



In 2022, Zenshuji will be celebrating 100 Years of dedication to our Temple by ancestors, past members, current members, families and friends. We all have stories to tell about how we became involved with Zenshuji and stories about the roles our Grandparents and relatives had in supporting and helping Zenshuji grow. As we look at the picture above, the original Zenshuji, a brick building, and the Zenshuji of today, a beautiful Temple, we owe a great deal of gratitude to our ancestors, grandparents, parents and past members for enduring 100 years of meaningful leadership, meditation skills and sessions, services for worship and cultural occasions.

In the 100 years of Zenshuji's existence, many things have happened. There have been many Bishops; faces of many Ministers; Teaching Buddhism through Sunday School Classes; Sunday School Teacher Workshops and Collaboration; Support from Parent's Club; Development of Fujinkai and Darumakai Organizations; Classes and activities for Young Buddhist Adults known as Jr. Y.B.A. and Sr. Y.B.A.; Culture Classes for members like computer, Japanese Language, Tea Classes, Cooking Classes, Japanese Calligraphy, Music – Taiko or Karaoke, Dancing – Ondo or Ballroom; Lectures on Buddhism; Zen Meditation Sessions; Horticulture; Volunteer Group and many more.

If you look at Zenshuji's Calendar, you will see that every month we are kept busy by various activities: Monthly and Memorial Services, New Year Celebration Service, Setsubun Service, Spring and Fall Ohigan Services, Hanamatsuri Service, Honoring Mothers and Fathers Luncheon, Obon – Carnival Season, Jizo-Bon Service, Otakiage Service, Temple Garden Cleaning, Keiro-Kai Luncheon, Eitaikyo Service, Chasen Kuyo, Shichi-Go-San (7-5-3) Service, Rohatsu Sesshin, Jodo-E Service, Omigaki Cleaning, Goeika Osame, Mochitsuki and Volunteer Service.



100th LOGO

First we start with the Logo for our Anniversary. The brush and ink circle used in the 100th logo is known as “ENSO”. In Buddhism the ENSO symbolizes enlightenment, strength, elegance and ‘Mu’ (the void). An incomplete or open circle allows for movement and development. Zen practitioners believe in ‘Wabi-Sabi’, the beauty of imperfection. It symbolizes the mind being free to simply let the body and spirit create.

Zenshuji’s 100th Anniversary Logo was designed by a collaboration effort between Reverend Shumyo Kojima and Atsuko Kubota, the Anniversary Committee chairperson also a graphic artist. It took many hours of drawing and re-drawing to get the Enso symbol that satisfied Kojima Sensei and Atsuko. What seems to be great in our eyes is not always good enough in the eyes of an expert artist/painter.



Zenshuji 100th Anniversary

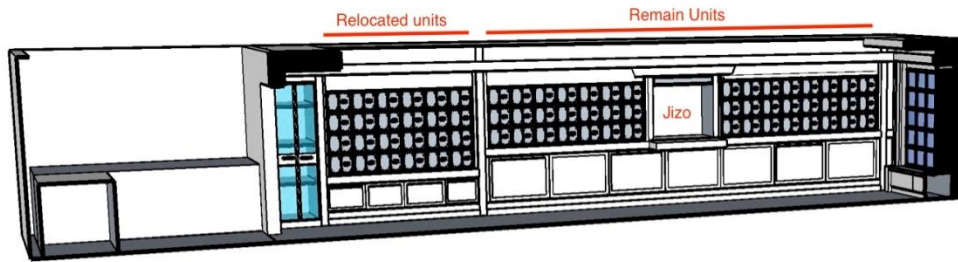
WHEELCHAIR ACCESS RAMP

The 100th Anniversary Committee has decided on some major projects to update and improve Zenshuji. **The first project is relocating and building a new Wheelchair Access Ramp.** It is currently under construction and the ramp part is almost complete. Drainage relocation under the ramp and parking lot resurfacing are the next phases which are expected to be done by the end of this fall. The ramp is wider and more easily accessible for people with wheelchairs, walkers, canes and strollers. We thank Ted Uekuma, the architect who helped design the ramp, worked on the permit from the city, and is supervising the construction. Rev. Kojima, John Flores and Atsuko Kubota reviewed the drawings and received Board approval. Miyazaki Sensei took photos of the progress of the projects.

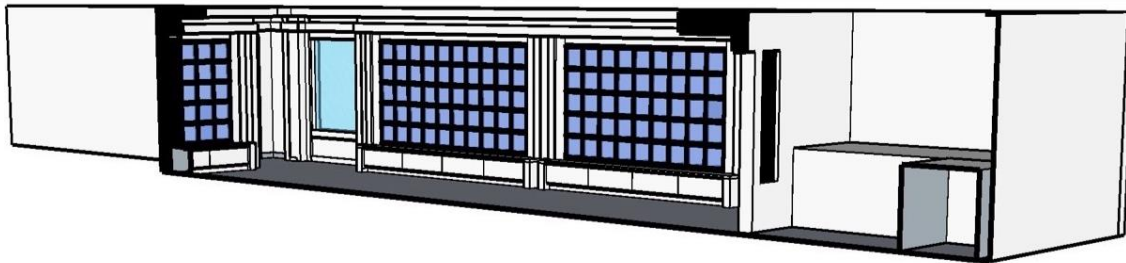


NOKOTSUDO

The second major project is the expansion of the Nokotsudo. The 100th committee came up with the concept design with Andrew Wolff. Toho sensei researched Japanese style nokotsudan and John Flores helped to pick the glass fronted niches. Ted Uekuma drew the plans and received the permit from the city to begin the construction. Notices were sent to the current niche holders of the intention of Zenshuji to remodel the room and also adding more niches to it. To keep it with the same design and feeling, Zenshuji contracted a Japanese contractor familiar with Japanese woodwork to do the renovation. New niches have glass fronts so people can see through the urns inside. Many of the younger generation are interested in purchasing a niche. Many of the Nisei parents already have their niches and visited by their children because it is more convenient. We would like to have this project done by this fall also.

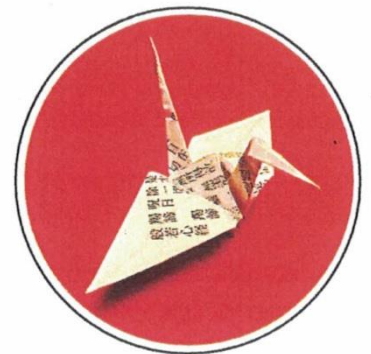


Hondo side new units



ZEN-BAZURU

Mrs. Hiroko Seki came up with the idea of folding Tsurus with the name of the project called Zen-Bazuru. With the assistance of Georgene Salisbury and Ellen Nagamine, they have encouraged members and friends to fold Tsurus with Hannya Shingyo written on Origami paper. The Goal was 1,000 Tsurus and thanks to the origami folders, we have achieved that goal already, so we have set a new goal of 10,000 Tsurus by the 100th year ceremonies next year. The plan is to decorate the inside of the Temple by hanging strings of tsurus from the ceiling at the anniversary.



HISTORY BOOK

Dr. Lon Kurashige with the assistance of Rev. Shumyo Kojima is collecting data from various sources and compiling a comprehensive account of the 100 years of Zenshuji's History. It is a long and tedious task plus many hours of research to put this project together. We look forward to the finished book by the 100th Anniversary.

JUKAI-E, BUDDHIST LECTURE SERIES, CEREMONIES & BANQUET

The Committee also has other projects in progress and we are looking for members and volunteers to help with the activities. They include: Buddhist lecture series starting this winter, Jukai-E and various ceremonies scheduled for the 100th Anniversary Celebration and Banquet in November 2022 and other events as they approach.

DONATION LEVELS & DONOR BOARD

Your generous donation is the foundation of Zenshuji. Donations made by our members like membership fee, friends of Zenshuji fee and other organizations and event donations are renewed on a yearly basis for support and maintenance of the Temple. Special occasions like the 100th Anniversary are extra events that are not covered by the fees and need special attention by our members and friends.

Your donation to Zenshuji, no matter the amount, will make a significant difference in the projects and events for the 100th Anniversary. Giving to Zenshuji is an investment to our place of worship, emotional stability and developmental growth of our members of all ages. WHAT CAN YOU DO? Please find a place in your check book to donate for the 100th Anniversary. Your contribution, no matter the size, will make a significant difference in our projects and plans. We would be grateful for your thoughtfulness, generosity and support.

All donations are fully tax-deductible. In honor of this occasion, the generosity of temple members and friends will be recognized in a special edition of the temple newsletter celebrating the successful achievement of the campaign goals of \$100,000 for the 100th and on a commemorative donor board that will be permanently displayed at the temple for all to admire. The names of donors will be recognized in the following categories:

Donation	Recognition Level
\$10,000 or more	Titanium
\$5,000 or more	Diamond
\$3,000 or more	Platinum
\$1,000 or more	Gold
\$500 or more	Silver
\$100 or more	Bronze

In Gassho

100th ANNIVERSARY COMMITTEE

Atsuko Kubota, <i>Chair</i>	Reverend Shumyo Kojima
John Flores, <i>Vice Chair</i>	Reverend Daiki Toho
Carolyn Abe Hashiba	Reverend Ryoko Miyazaki
Amy Honjiyo	
David Isobe	
Harry Matsumoto	
Howard Miyoshi	
Ellen Nagamine	
Georgene Salisbury	
Hiroko Seki	
Ted Uekuma	
Sunil Vernekar	



Zenshuji 100th Anniversary

ZENSHUJI SOTO MISSION 100TH ANNIVERSARY DONATION

NAME: _____

ADDRESS: _____

CITY, STATE & ZIP CODE: _____

TELEPHONE: _____

E-MAIL (OPTIONAL) _____

____\$10,000 ____\$5,000 ____\$3,000 ____\$1000 ____\$500 ____\$100 for 100 YRS ____\$ OTHER

Please make checks payable to Zenshuji Soto Mission. If you wish to make a contribution by credit card, please visit www.zenshuji.org Donation page. (Please kindly add 4% of Paypal service fee to your donation if using online.)

ACKNOWLEDGEMENT INFORMATION (check one)

____ I/We to use the following name(s) in all acknowledgements:

NAME(S) _____

OR: **IN HONOR/MEMORY OF:** _____

____ I/We wish to have our gift remain anonymous.

Zenshuji would like to **THANK YOU** in advance for your generosity and making a difference to help reach our goal.